



value focused. results driven.

Best Practices using the New Maximo Health, Safety and Environmental (HSE) Manager

3 Nov 2011

Presenter: David Carter

# Agenda

- 1 What is Maximo HSE Manager?
- 2 History of HSE
- 3 Key Components and Terminology
- 4 Practical Applications
- 5 Live Demonstration
- 6 Best Practices / Tips
- 7 Questions

# What is HSE - IBM Maximo Product Portfolio – 2011

## Core Solutions

|                         |                              |                                |  |
|-------------------------|------------------------------|--------------------------------|--|
| Maximo Asset Management | Maximo Asset Mgmt Essentials | Maximo for Energy Optimization | Maximo Data Center Infrastructure Mgmt |
|-------------------------|------------------------------|--------------------------------|--|

## Industry Solutions

|                |               |               |
|----------------|---------------|---------------|
| Utilities      | Life Sciences | Nuclear Power |
| Transportation | Government    | Oil & Gas     |

## Add-On Solutions

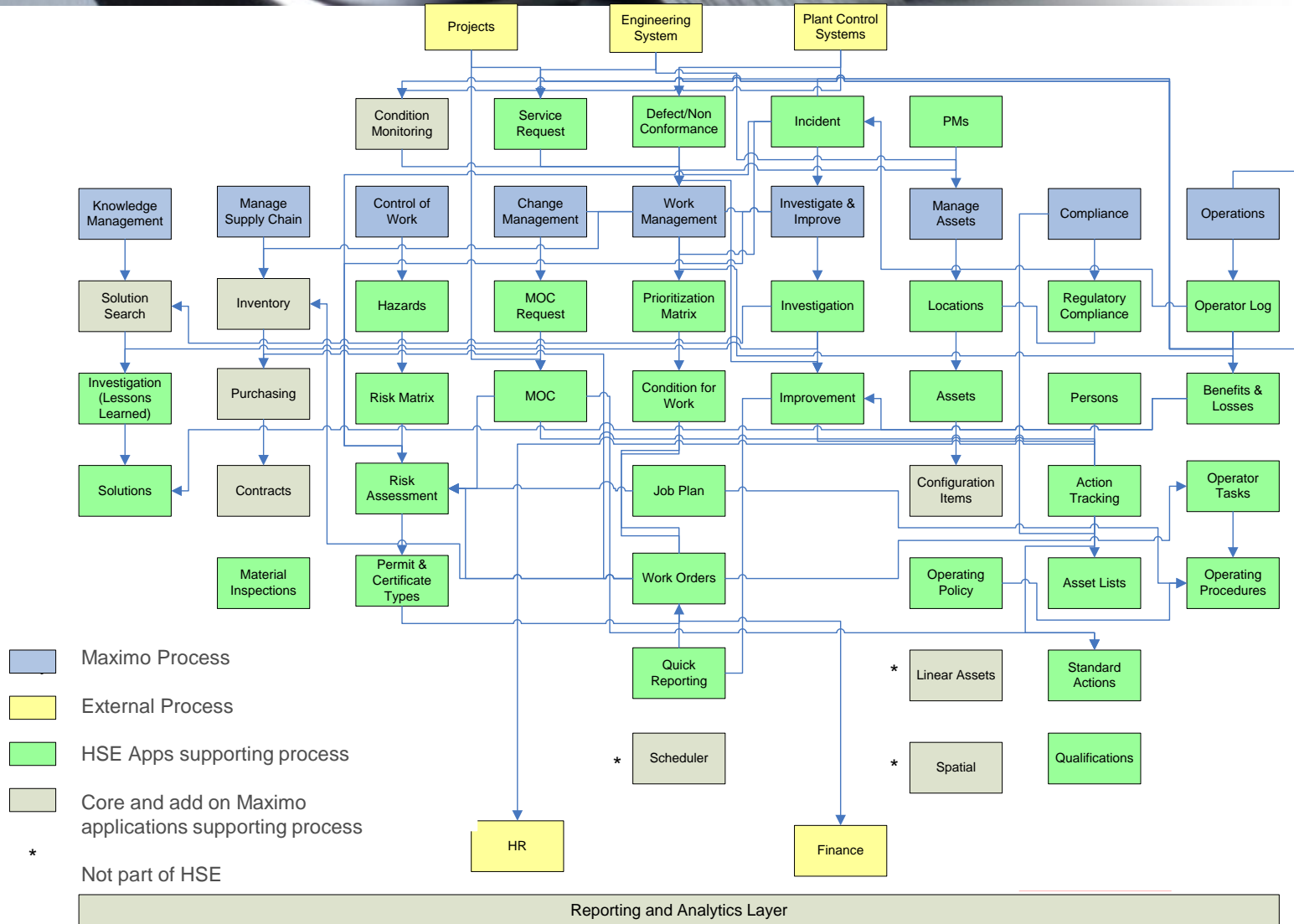
|                     |                             |                                |                    |                            |                       |
|---------------------|-----------------------------|--------------------------------|--------------------|----------------------------|-----------------------|
| Service Provider    | Archiving                   | Spatial                        | Scheduler          | Internal Service Provider  | SMART Mobile Work Mgr |
| Calibration         | Asset Configuration Manager | Change & Corrective Action Mgr | Linear Assets      | SMART Mobile Inventory Mgr |                       |
| MX Mobile Asset Mgr | MX Mobile Inventory Mgr     | MX Mobile Work Mgr             | Everyplace         | SMART Mobile Auditor       |                       |
| SAP ERP Adapter     | Oracle ERP Adapter          | Primavera Adapter              | MS Project Adapter | Real Time Asset Locator    |                       |

Health, Safety & Environmental

Specific content is subject to change.

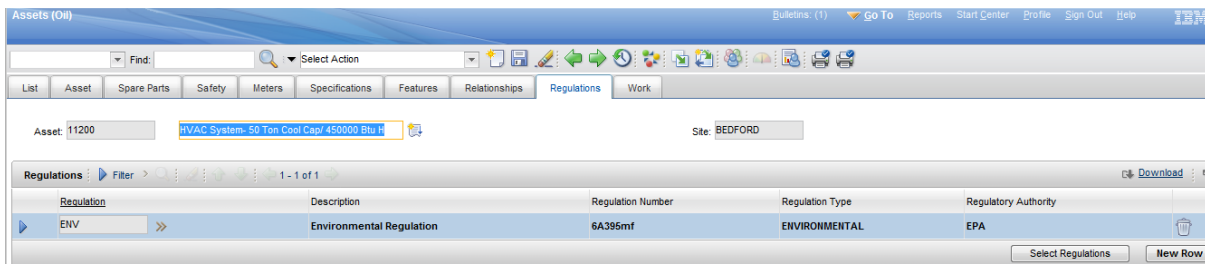


# What is HSE Manager – HSE Integrated processes

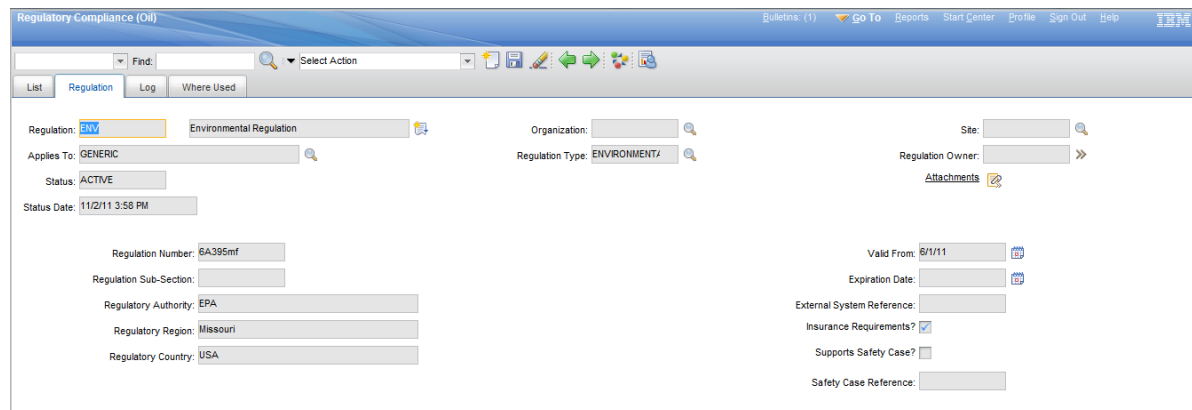


# What is Maximo HSE?

- A Maximo industry solution with a subset of new applications and application extensions.
- Extension (i.e. Assets)




- New applications (i.e. Regulatory Compliance)



## History of HSE Manager

- Released 2011
- Originally Developed out of Oil and Gas Industry Requirements
- Maturity - Maximo Oil and Gas > 6 years (v6)
- Other Industries have similar requirements (removes specific O&G functionality drilling, O&G reliability)
- Health, Safety, Environmental, Quality and Compliance Requirements
- Joint releases with core Maximo 7.5+ onwards

A close-up photograph of a computer mouse and keyboard, with the mouse in the foreground and the keyboard keys visible in the background.

# Key Components and Terminology

## Application Extensions

- Work Order Tracking
- Service Requests
- Quick Reporting
- Purchase Requisitions
- Purchase Orders
- Preventive Maintenance
- Job Plans
- Hazards
- Assets
- Asset List
- Locations
- Routes
- Item Master
- People
- Qualifications



# Key Components and Terminology

## New Applications

- MOC
- MOC Requests
- Action Tracking
- Defects
- Incidents
- Solutions
- Improvements
- Investigations
- Risk Assessment
- Prioritization Matrix
- Permit and Certificates
- Condition for work
- Standard Actions
- Standard Action Groups
- Operator Log
- Operator Tasks
- Operating Policies
- Operating Procedures
- Regulatory Compliance
- Risk Matrix
- Benefits and Losses

# Practical Applications / Use Cases

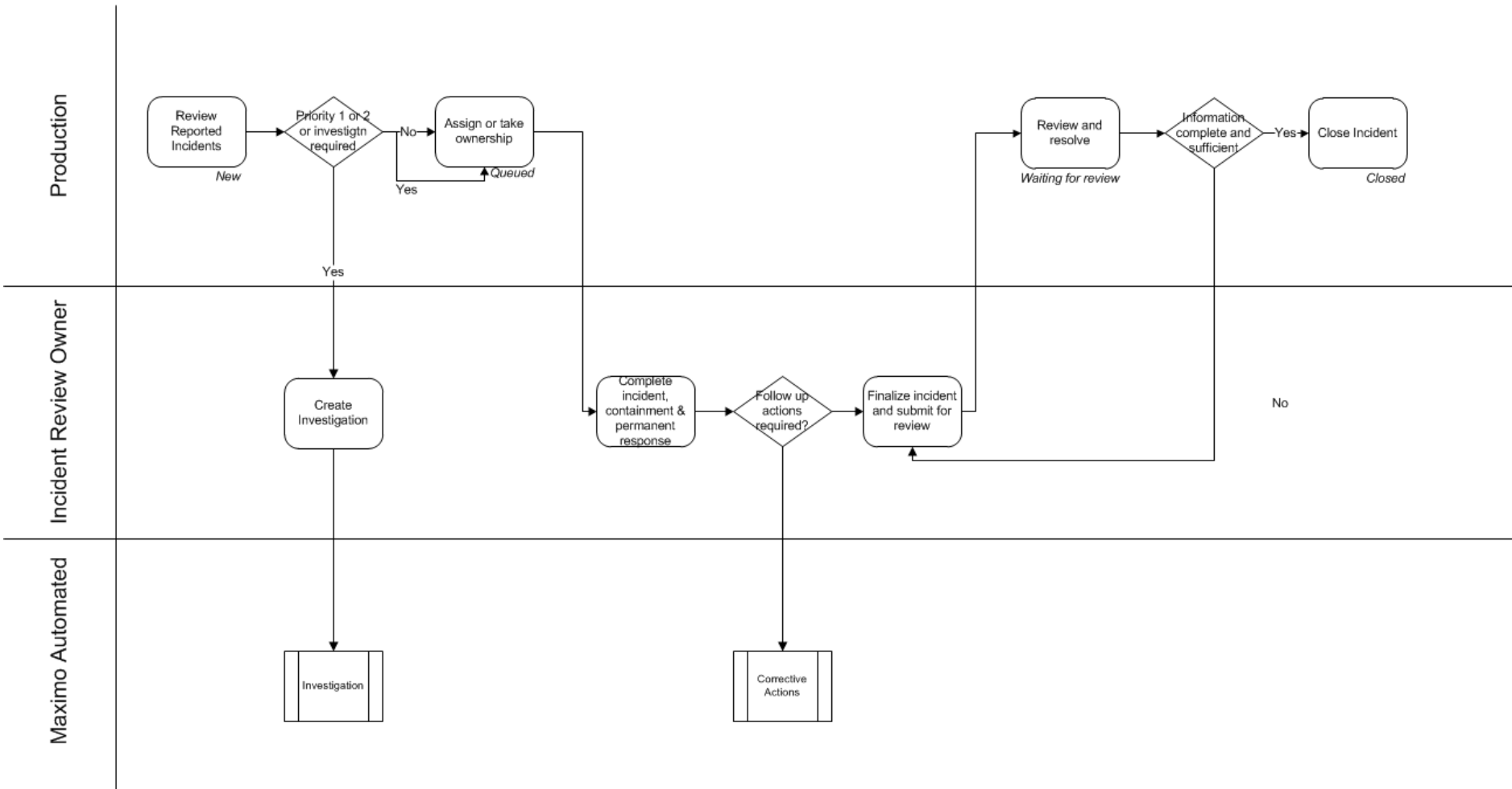
- **HEALTH, SAFETY AND ENVIRONMENTAL PROCESSES**  
Reporting, use of Maximo incident, investigation, after action tracking.
- **QUALITY AND RELIABILITY PROCESSES**  
Defect, incident, investigation, RCFA, FMEA, after action tracking
- **COMPLIANCE IDENTIFICATION AND REPORTING**  
Detailing health, safety, environmental and quality regulations, operating policies, tracking changes, identification of affected asset or other procedures and their impact.
- **MANAGEMENT OF CHANGE (MOC)**  
Managing the business process of changes in process and asset configuration.

**Let's demonstrate...**

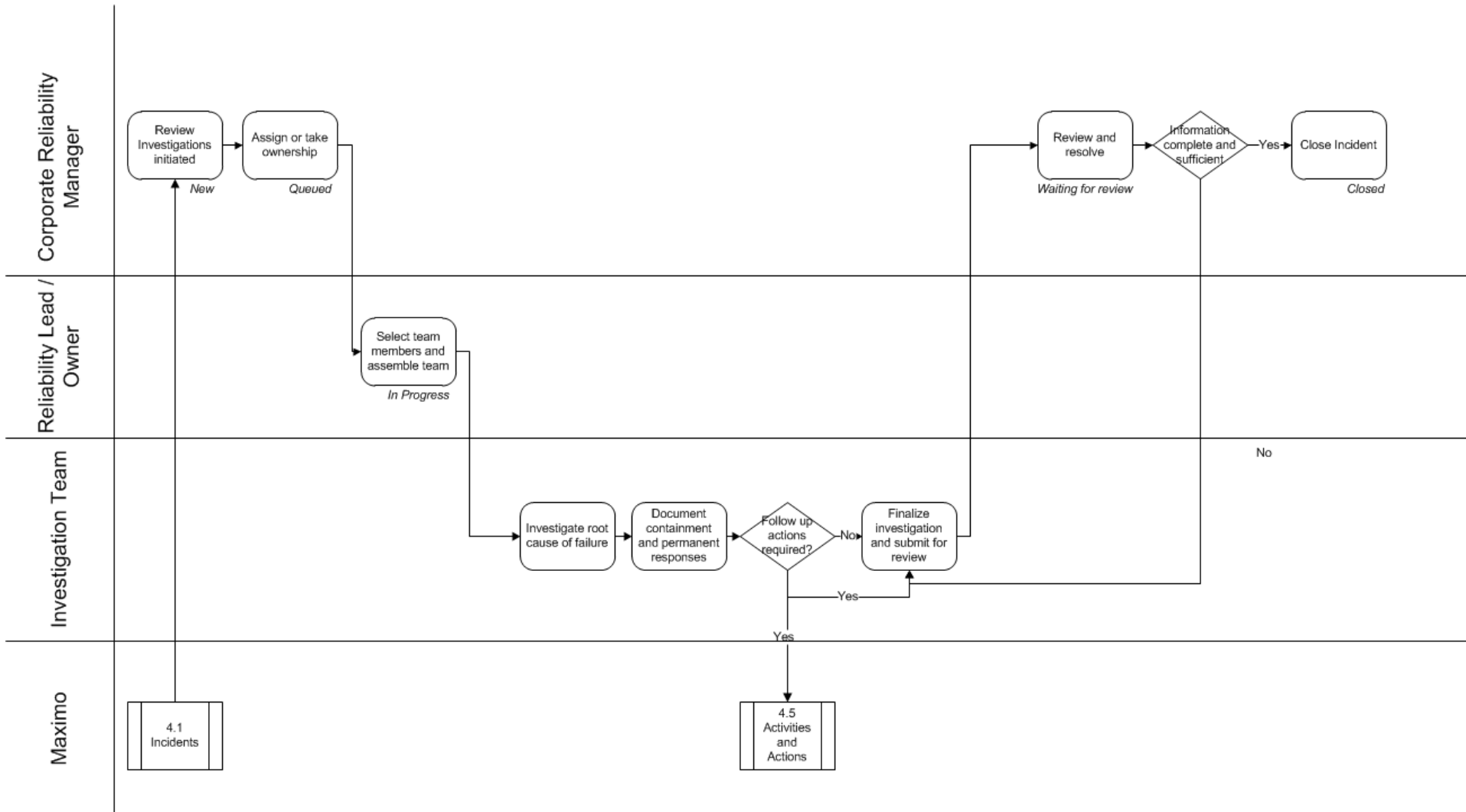
## Best Practices / Implementation Tips

- Spend time defining the whole business process, don't expect product to fit your business process out of the box.
- Use Maximo workflow components to enforce and automate the business process.
- Ensure tracking, workflow and escalation of follow up actions – use the Maximo tools (Dashboards, escalations, workflow, KPIs).
- Talk to other users.
- Implement bite size chunks (by process).

## Incident Management and Reporting



# Reliability Investigation



# Questions

- ???



value focused. results driven.

Thank You!

David Carter  
Senior Consultant  
713-724-2207

[dcarter@ontracksconsulting.com](mailto:dcarter@ontracksconsulting.com)